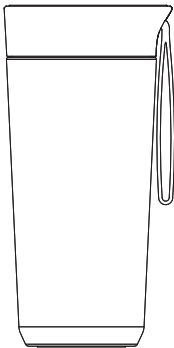


# CUKO

## BLENDER FLASK



**Warning:** Do not put hot food or liquids above 50°C in the cup for stirring.

**Warning:** To avoid injury from misuse, carefully read the instruction manual before using this product, and use this product strictly according to the intended purpose specified in the instruction manual.

1. Safety Precautions	1
2. Product Component Names	3
3. Product Instructions	3
4. Cleaning and Maintenance	6
5. Troubleshooting	7

## 01 / Safety Precautions



***Warning: Be cautious of risks that may cause danger to individuals, serious injuries, or significant property damage.***

1. Do not blend hot food or liquids above 50°C in the cup.
2. This product contains a lithium battery. It is strictly prohibited to dismantle the product casing privately to avoid potential damage to the battery core, mainboard, or other hazards.
3. It is strictly forbidden to crush, pierce, short-circuit, immerse in water or fire, or expose to temperatures above 60°C.

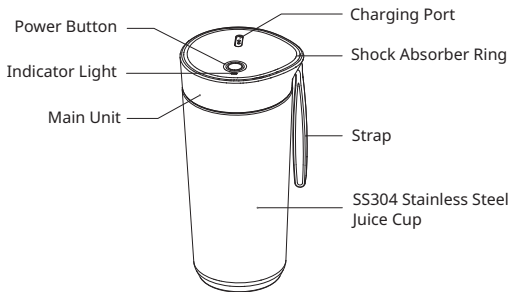


***Warning: Pay attention to risks that may cause injury to individuals or damage to items.***

1. During operation, do not open the cup to avoid interrupting normal operation.
2. This product is only suitable for household and office use. Do not use it for other purposes.
3. Avoid contact with the blades, motor, and other moving parts of the product during operation to prevent injury or damage to the product.
4. The product's working time is 40 seconds per cycle. After three consecutive cycles, stop for 5-10 minutes to allow the motor to cool before resuming operation.
5. It is prohibited to operate the product empty (without food in the cup), overload it (without adding water, directly blending hard objects like ice cubes or carrots), or use excessive amounts.
6. When blending ingredients prone to foaming, such as bananas, the product may jam.
7. Do not disassemble or modify the product privately.
8. After use, clean the product promptly. Use clean water to rinse food-contacting parts. When emptying the cup and cleaning components, handle with care to avoid cuts from sharp blades (wearing protective gloves is recommended).
9. Store the product in a place not easily accessible to children. Do not allow individuals with physical, sensory, or mental disabilities, or those lacking relevant experience or knowledge (including children), to use or play with the product.

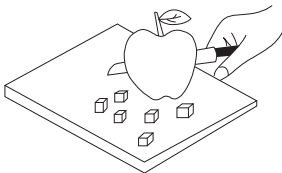
10. Do not place the product in environments with high temperatures, strong magnetic fields, flammable or explosive gases (such as natural gas or methane), to prevent abnormal operation of components or incidents such as fires.
11. Do not place any part of the product in a dishwasher, microwave oven, sterilizer, or hot water exceeding 60°C for cleaning or disinfection. Do not use other products for heating to avoid deformation or damage to components.
12. This product contains a built-in lithium battery. Please note the following:
  - a. Store and use the product in an environment with temperatures between 0°C and 45°C.*
  - b. If not used for a long time, charge the product every three months to prevent battery damage.*
  - c. Charging speed may be slower in environments below 10°C, which is normal. Do not exceed 45°C when charging.*
  - d. Charge the product promptly when the battery is low.*
13. When disposing of the product and its packaging, please hand it over to qualified departments for recycling.
14. Do not use an Apple charging plug or USB charging port on a power strip, as it may not charge properly.
15. It is recommended to use chargers produced by regular manufacturers with an output of 5V/1A or 5V/1.5A for charging, or use a power bank or computer USB port for charging.
16. Do not overfill with water to prevent material overflow when tightening the cup lid.
17. Avoid storing carbonated beverages, milk products, juices, etc., for long periods.
18. After consumption, tighten the cup lid to ensure hygiene and cleanliness.
19. Keep the product out of reach of children to prevent accidents.
20. Do not place the bottle body on fire to prevent deformation of plastic parts.
21. Do not store carbonated zinc drinks or easily perishable milk products.

## 02/ Product Component Names



## 03/ Product Instructions

1. Clean the fruit, remove the peel and core, and cut it into 1cm \* 1cm \* 1cm cubes.



2. Place the cut fruit into the cup, add water or milk, ensuring that the total amount of ingredients and liquid does not exceed the maximum scale line of the cup (approximately 300mL). The optimal ratio is 40% fruit and up to 80% liquid.

3. Twist the main unit clockwise onto the cup.

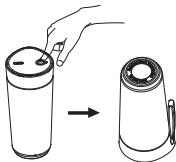
Clockwise rotation of the main unit



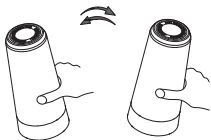
Counterclockwise rotation of the cup

4. Double-click the "power button" to start, then slowly invert the main unit. When working, you can hold the product at a 45-degree angle for better blending.

***Note: The product is set to work for 40 seconds per cycle. After starting, the blue light remains on.***



Tighten the lid, double-click the power button to start, and invert the cup.



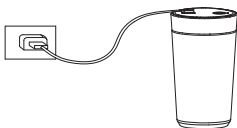
Hold at a 45-degree angle for better blending.

5. After work is completed, reposition the product upright, and twist open the main unit for consumption.



6. Use a mobile adapter purchased through regular channels to charge the product.

***Low battery: RED LIGHT remains on; when fully charged, BLUE LIGHT remains on.***



## **04/ Cleaning and Maintenance**

1. Before cleaning, ensure that the blades have stopped rotating.
2. Do not use steel wire balls, abrasive cleaners, or corrosive liquids such as gasoline, acetone to clean the product.
3. The main unit can be rinsed quickly with tap water and promptly dried. Do not immerse in water or other liquids to prevent component damage or product leakage.
4. Rinse the inside of the cup and food-contacting parts with clean water, and promptly dry or air dry. Handle the sharp blades with care to avoid cuts (protective gloves can be worn).
5. Quick cleaning: Add a suitable amount of clean water to the cup, tighten the main unit, start the power button, and work for 5-10 seconds.
6. When storing, ensure that the product is clean, dry, and placed in a dry and ventilated area, away from direct sunlight.



## 05/ Troubleshooting

Description	Indicator Light	Cause	Solution
The machine does not start	Blue light flashes 5 times then goes off.	The main unit and cup are not tightly fastened.	Please tighten the main unit and cup clockwise.
	The red light flashes 5 times then goes off.	Low Battery	Please Charge the Battery
The motor stops rotating	The machine stops, and the red light comes on for 4 seconds before turning off.	1. Fruit particles are too large.  2. Blending bananas or other foamy foods may cause the blade to jam.	1. Cut the fruit into 1*1*1cm cubes.  2. The liquid should not exceed the recommended maximum level.  3. Before starting, do not invert the cup to avoid contact between the blade and the fruit. After starting, invert the cup and shake it from side to side.
	The red light flashes 5 times then goes off.	Low Battery	Please Charge the Battery

No indication when charging.	The red light does not come on.	1. Poor contact. 2. Incompatible adapter.	1. Re-establish Contact. 2. Replace with a compatible adapter for charging.
After starting, the cup becomes loose.	The red light comes on for 0.5 seconds and then goes off.	The cup becomes loose.	Tighten the cup again.
The motor is disconnected.	The red light comes on for 2 seconds and then goes off.	The motor connection is loose.	Return for repair.

# REGISTER E-WARRANTY in 4 SIMPLE STEPS

Please register your warranty online



**SCAN ME**



**01**

Scan QR Code or  
log in to  
[https://www.mynt.com.my  
/e-warranty.html](https://www.mynt.com.my/e-warranty.html)



**02**

Attach Product  
Invoice



**03**

Register Product  
Warranty



**04**

Receive Confirmation  
Email